

**Kodak** Ngenuity  
Series Scanners



The **smartest**  
way to make  
paper **history.**

# The smartest way to scan the widest range of documents

**Kodak Ngenuity Series Scanners** – the next scanning innovation in Kodak’s document imaging solutions’ portfolio – deliver an unprecedented combination of intelligent paper handling, 40% larger feeder capacity than other scanners in their class and razor-sharp image quality, with the added benefits of a user-friendly interface, easy maintenance and a low cost of consumables. Users across industries can now convert a wider range of documents into high-quality digital images, quickly and more efficiently than ever before. It’s an ingenious way to make, manage, and move images and information.



## Advanced document handling = improved workflow efficiency

### Scan a wider range of documents

Everything from rice paper to plastic cards, to stuffed envelopes and cardstock, to photos and long EKG strips is fair game for the **Ngenuity** Scanners, which scan the widest range of documents of any scanner in their class\*.

With an unlimited daily duty cycle, the **Ngenuity** Scanners breeze through documents up to 311 mm wide and 200 meters long, at speeds that are among the best in their class:

- 150 pages per minute in black-and-white, colour and greyscale at 200 dpi

Further, you don’t have to sacrifice long-term efficiency for short-term speed. Some components on the scanner have been tested to last for more than 50 million scans.

### Straight pass-through paper path and document modes add versatility

While most documents can make their way easily through the scanner’s rotary path, the **Ngenuity** Scanners include an alternative “straight pass through” paper path for exception documents (such as stuffed envelopes and laminated cards) that cannot make the turn on the rotary path.

What’s more, special document scanning modes auto-adjust the **Ngenuity** Scanners’ feeding and transport scanner settings for very long, folded or fragile documents.

### Auto-adjustable feeder tray holds 40% more documents

The **Ngenuity** Scanners’ feeder tray holds 700 documents – 40% more than other scanners in their class.

The tray also rises and falls – literally – in perfect sync with your batch size, thanks to Variable Feeder Tray Capacity Control, which remembers your most recent batch size. And since the feeder does not restrict you to manufacturer-set batch size limitations, you can scan almost any size batch you want, faster than ever before.

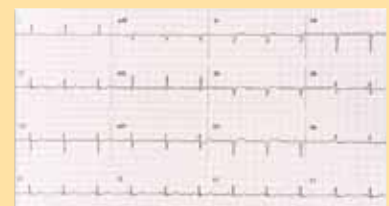
The feeder tray’s capacity and innovative technology save you valuable time when loading and switching batches.

\*Comparative statements are based on published specifications of certain other mid- to high-volume production scanners at the time of printing.

**The Kodak Ngenuity Scanners’ innovative design** packs in smart features that make a big impact in helping you spend less time sorting paper, adjusting scanner settings and worrying about image quality, and more time streamlining your document workflow and boosting your bottom line.



**Fragile and thin documents**  
Rice Paper • Airbills • NCR Forms



**Very long documents**  
EKG Strips • Oil Well Logs

## State-of-the-art technologies = enhanced image quality

### Next-generation cameras deliver razor-sharp images

Armed with top-of-the-line **SharpShooter** Trilinear CCD cameras, the **Kodak Ngenuity** Scanners deliver 600 dpi optical capture and output.

This advanced camera technology delivers higher OCR, ICR and barcode recognition rates and more reliable forms processing.

### LED illumination: longer lasting, no warm-up time

LED lights require no warm-up time, meaning the scanner can deliver optimal image quality from the minute you turn it on.

The LED lights are designed to last the life of the scanner with normal use and provide a more stable level of light than traditional lamps. This translates into more consistent image quality and less time spent calibrating the cameras. In fact, the **Ngenuity** Scanners' cameras only need to be calibrated one to two times per year.

### Onboard **VirtualReScan Professional**: image enhancement at no cost to speed

Onboard **VRS Professional** Application is integrated into the hardware of the scanner. This way, you can enjoy all the image enhancement and error resolution functionality of the **VRS** application without sacrificing speed.

Advanced colour management and more precise image cropping are only two of the many features at your fingertips with Onboard **VirtualReScan Professional** Application on the **Ngenuity** Scanner.

## Added-value functionality = preferred user experience

### Easy to install, use and maintain

The **Ngenuity** Scanners feature a USB 2.0 port and cable to make it easier for you to connect the scanner to the PC. They have a SCSI port as well.

You can access much of the scanner functionality directly through the PC. For example, the **Ngenuity** Operator Utility (NOU) allows you to track the total number of scans and monitor maintenance schedules.

Further, our user-friendly interface with front panel functionality provides easy access to frequently used features and includes two user-customisable function buttons.

**Ngenuity** Scanners are also easy to clean and maintain. The scanners' only consumables – the rollers and tires – are easy to replace; and users can install optional accessories, like the imprinter, easily.

### Enhanced ultrasonic multi-feed detect and ignore

Three independently controlled, ultrasonic sensors raised the bar on multi-feed detection.

What's more, the "Multi-feed Ignore" setting on the **Ngenuity** Scanners now allows you to accept scanned images and continue scanning or alert the scanner in advance to accept an intended multi-feed.

The "Ignore by Size" option lets you proactively scan items – such as taped receipts and sticky notes – that the scanner might otherwise identify as a multi-feed and stop.

### Value, durability and performance

The **Ngenuity** Scanners' steel paper path and durable parts (including protectively sealed CCD cameras, long-lasting LED lights, and rollers that last for 600,000 scans) ensure that the scanners are able to withstand the many challenges of any hardworking production environment. This means a low, overall cost of scanner maintenance and ownership.

What are you waiting for? Ask to see a demonstration of the **Ngenuity** Scanner today.



#### Exception documents

- Receipts
- Folded Documents
- Photographs



#### Thick and stiff documents

- Stuffed Envelopes
- Plastic Cards
- Cardstock



#### Legal and A4 size documents

- Contracts
- Forms
- Invoices

# Kodak Ngenuity Series Scanners

Scanning Speed A4 Landscape at 200 dpi	<b>9150:</b> 150 ppm/300 ipm; <b>9125:</b> 125 ppm/250 ipm; <b>9090:</b> 90 ppm/180 ipm
Scanning Speed Black-and-White, Colour, Greyscale Simplex/Duplex Portrait at 200 dpi	<b>9150:</b> 120 ppm/240 ipm; <b>9125:</b> 100 ppm/200 ipm; <b>9090:</b> 70 ppm/140 ipm
Daily Duty Cycle	90,000 - 150,000 pages per day (depending on model)
Resolution	Optical: 600 dpi Black-and-White or Greyscale Output: 100-600 dpi Colour Output (with the VRS application): 100-400 dpi
Roller Life (bond)	600,000 scans
Resolution	Output: 600 dpi, Optical: 600 dpi
Camera Technology	SharpShooter Trilinear 7.6k CCD
Lighting Technology	White LEDs - instant warm-up; designed to last the life of the scanner with normal use
Image Enhancement	Onboard VRS Professional
Interface	USB 2.0 (cable included); SCSI III
Supported Drivers (Included)	ImageControls, ISIS and TWAIN through VRS Professional; direct ISIS, TWAIN
Multi-feed Detection	Ultrasonic Multi-feed featuring: Three sensors, Preemptive Ignore, Ignore As Is, Ignore by Size
Imprinting	Optional user-installable pre- and/or post-scan imprinter, time and date stamping, 72 characters
Document Size	43 x 64 mm to 318 x 1016 mm
Document Size - Long Document Mode	Up to 200 m
Maximum Image Width	311 mm
Paper Thickness - Rotary	0.038-0.89 mm
Paper Thickness - Straight-Through Paper Path	0.038-1.78 mm
Paper Weight	30-1,200 g/m <sup>2</sup>
Feeder Capacity (75 g/m <sup>2</sup> paper)	700 documents - Variable Feeder Tray Capacity Control
Scanner Size (HxWxD)	49.5 x 52.1 x 76.2 cm (Straight paper path door closed)
Scanner Weight	50.8 kg
Power Requirement and Consumption	220-240 V; 50/60 Hz; Minimum (Standby): 6.7 Watts; Sleep/Energy Star: 60 Watts; Maximum (Scanning): 175 Watts
Environmental Factors	Temperature: 10°C to 38°C; Relative Humidity: 10% to 80%
Special Features	Straight Pass Through Paper Path, Special Documents Mode, Advanced Colour Functionality
Package Content	USB Cable, Installation Resource CD with Kodak Ngenuity Operator Utility (NOU) and the VRS Professional Application, Power Cord, Starter Cleaning Kit, Camera Calibration Kit
Additional Options	User-installable Pre- and/or Post-scan Imprinter with Time and Date Stamping, Roller Kit, Cleaning Kit, Power Conditioner
Warranty*	12 months on-site, 3-4 business days response time
Warranty Enhancement*	36 months PerformancePlus on-site, 8hrs response time, consumables included**

Specifications are subject to change without notice. \*There may be geographical limitations to the availability of Services. For full details please contact your Reseller of Kodak products or your local Kodak Service & Support organisation. \*\* Please see terms & conditions for PerformancePlus.



As an Energy Star® Partner, Eastman Kodak Company has determined that these products meet Energy Star® guidelines for energy efficiency.



Avanquest

Avanquest UK  
Sheridan House, 40-43 Jewry Street,  
Winchester, Hants SO23 8RY  
Phone: 01962 835053 Fax: 01962 835100  
Email: sales@processflows.co.uk  
Web: www.processflows.co.uk

©Kodak, 2010. Kodak, Ngenuity and SharpShooter are trademarks of Kodak. DoldeMedien 23\_10

Subject to technical change without notice.  
CAT No. E-DI.064.0210.en.01

It's time for you **AND** Kodak