

Advanced 3D search for PLM and CAD

Search-by-shape technology allows designers to find and re-use existing components, even when a part number or name isn't known. This increases design productivity and reduces costs, by avoiding the wasted time and expense involved in 're-inventing the wheel'.

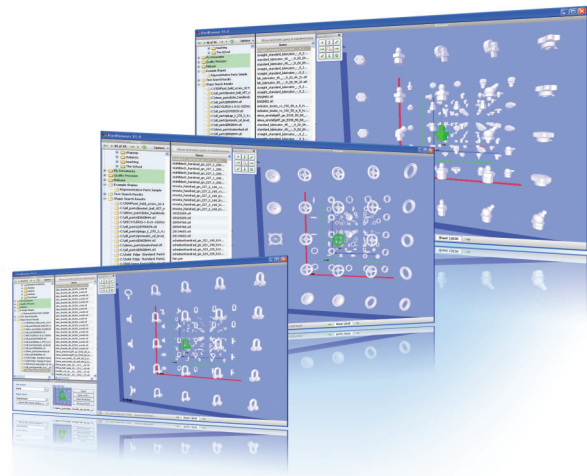
Engineering companies invest heavily in product design and in the systems to help them create, manage, store and process product data. But typically, these systems provide only basic search and retrieval tools, so opportunities are missed to re-use designs, or to rationalise existing parts libraries. Using ShapeSpace allows an organisation to wring more from their existing investments in product design, ultimately delivering a higher level of customer service and profitability.

Integrating innovative search-by-shape with text search and 3D visualisation, enhances keyword and metadata searches with a simple to use geometric search. This technology offers a new and powerful way for users to locate parts and associated data and presents the results collectively for comparison in full 3D.

Suitable for any organisation with libraries of 3D CAD models, ShapeSpace integrates with all major CAD, Product Data Management (PDM) and Product Lifecycle Management (PLM) systems.

By understanding the geometry of components, the software gives users powerful tools to manage their parts libraries:

- Find and consolidate duplicate parts.
- Discover opportunities to rationalise groups of parts.
- Browse parts - Quickly find and re-use existing parts.
- Identify parts during service and maintenance.



ShapeSpace technology delivers the following business benefits:

- Saves the management costs and inventory costs of duplicate designs.
- Simple deletion or archiving of non-current duplicate parts keeps databases up-to-date and is ideal for data cleansing prior to migrating to a PLM solution.
- Reduces the rate of new part introduction.
- Saves designers' time by allowing rapid retrieval of proven designs.

About ProcessFlows:

A leading provider of software solutions that automate business processes and improve communications.

We offer expert advice, provide system integration, installation and training with a first class support structure and customer care programme.